

UPPER DIGESTIVE SYSTEM LAB EXERCISES 20 & 21

Dr. Lisa Brinn

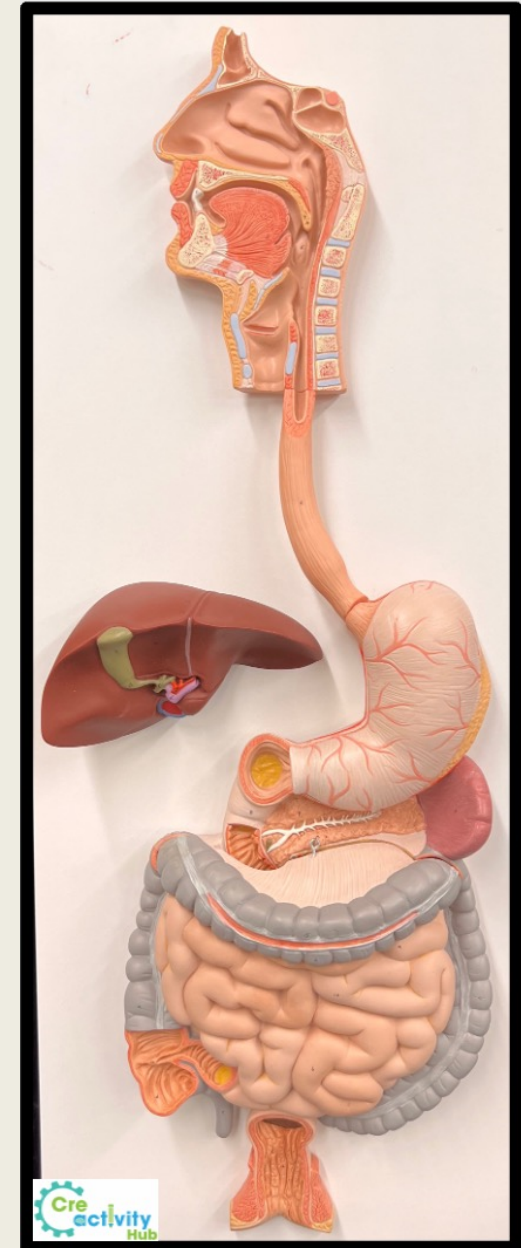
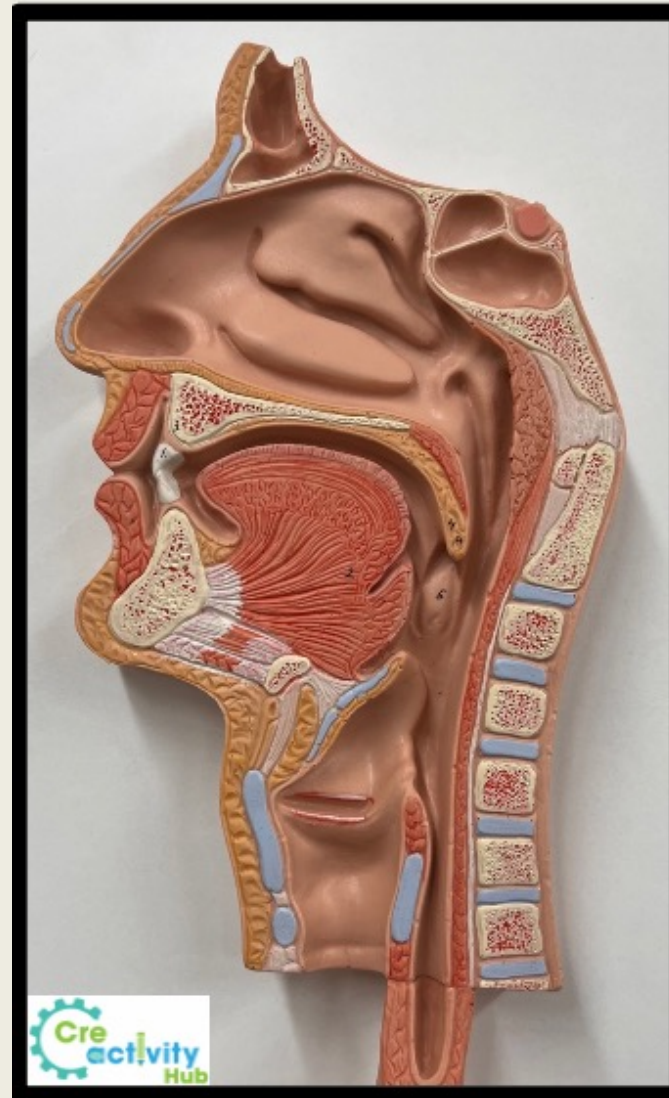
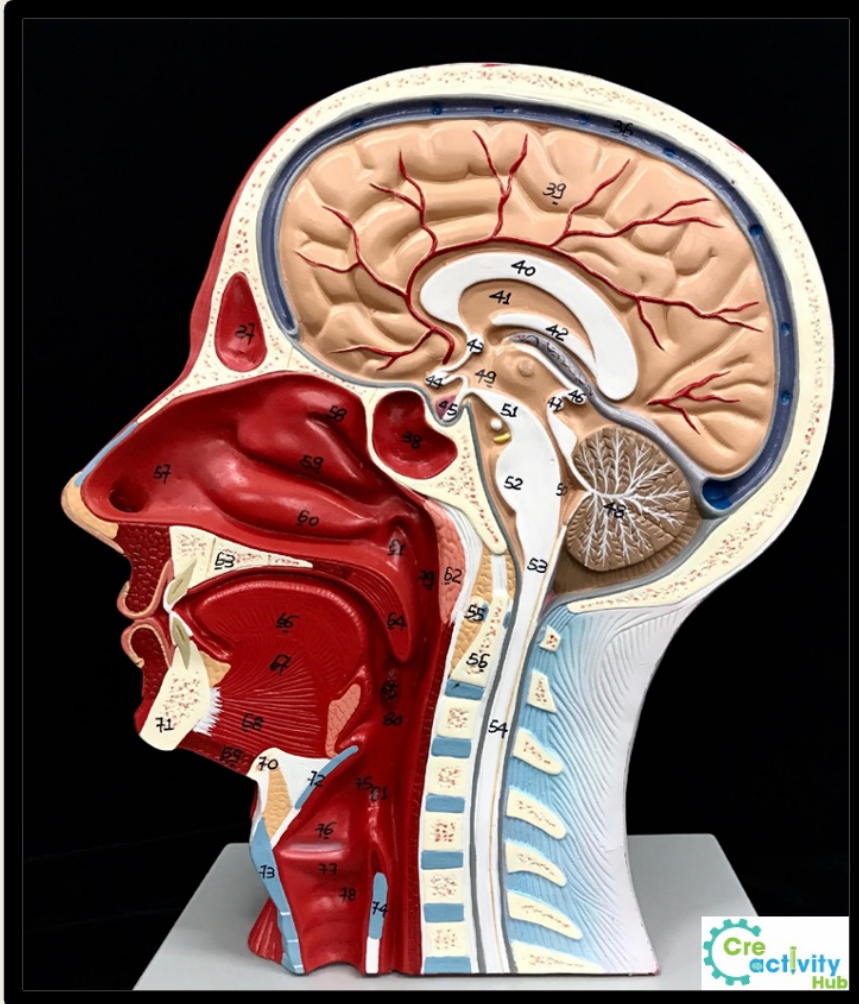
Video Recording Links of Lab Models

- [A&P II Module 8 Upper Digestive System](#)
- [A&P II Module 8 Stomach and Small Intestine](#)
- [A&P II Module 8 Salivary Gland](#)

Digestive Tract Terminology List

- Anus
- Esophagus
- Large intestine
- Oral cavity
- Pharynx
- Rectum
- Small intestine
- Stomach

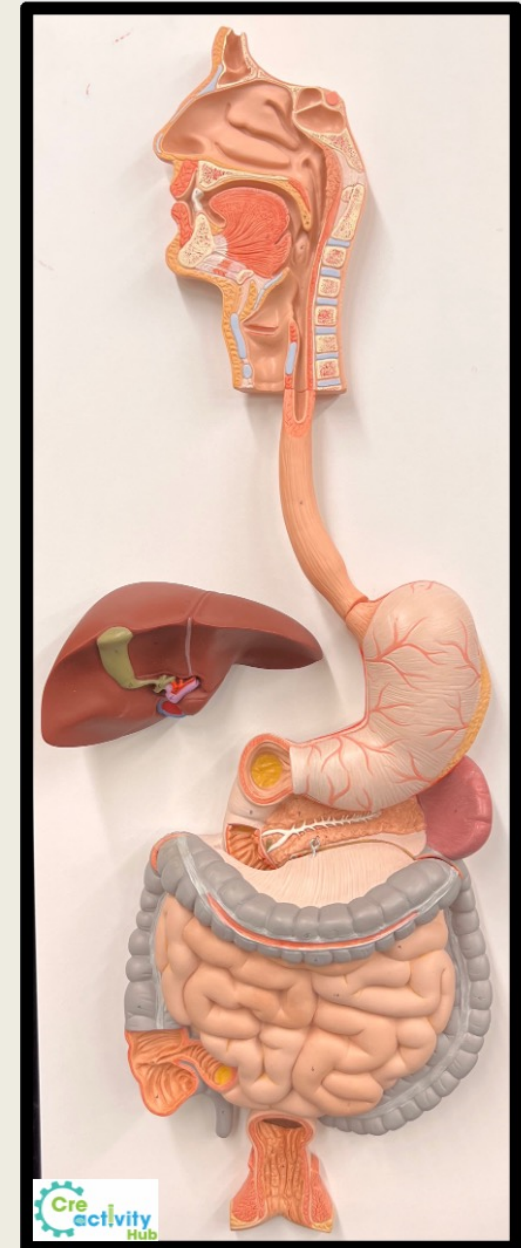
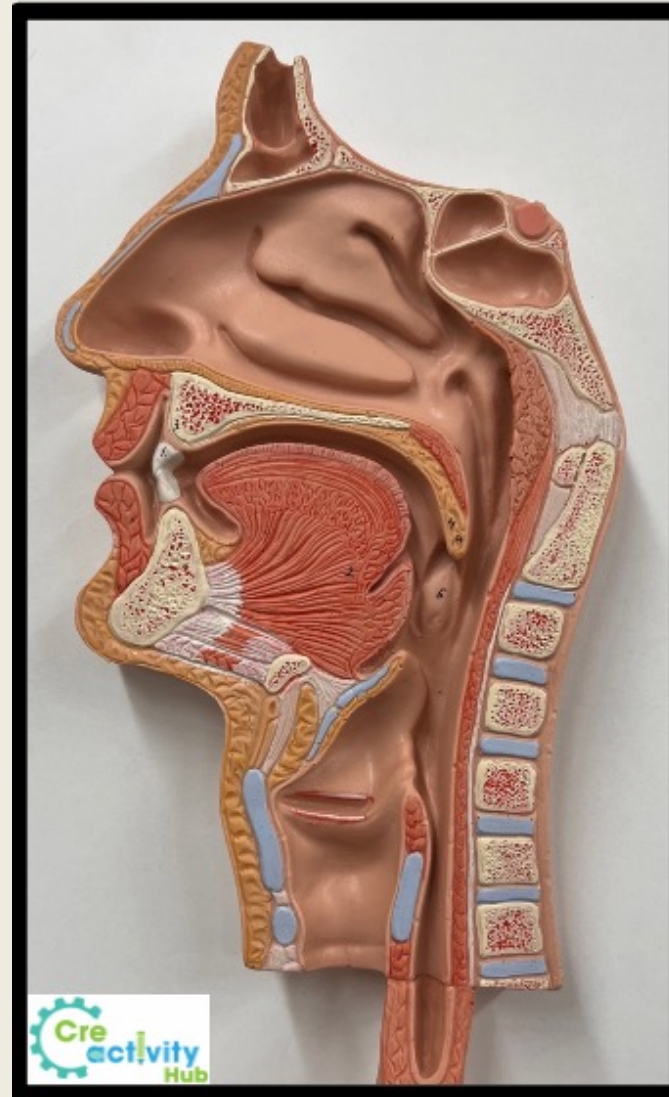
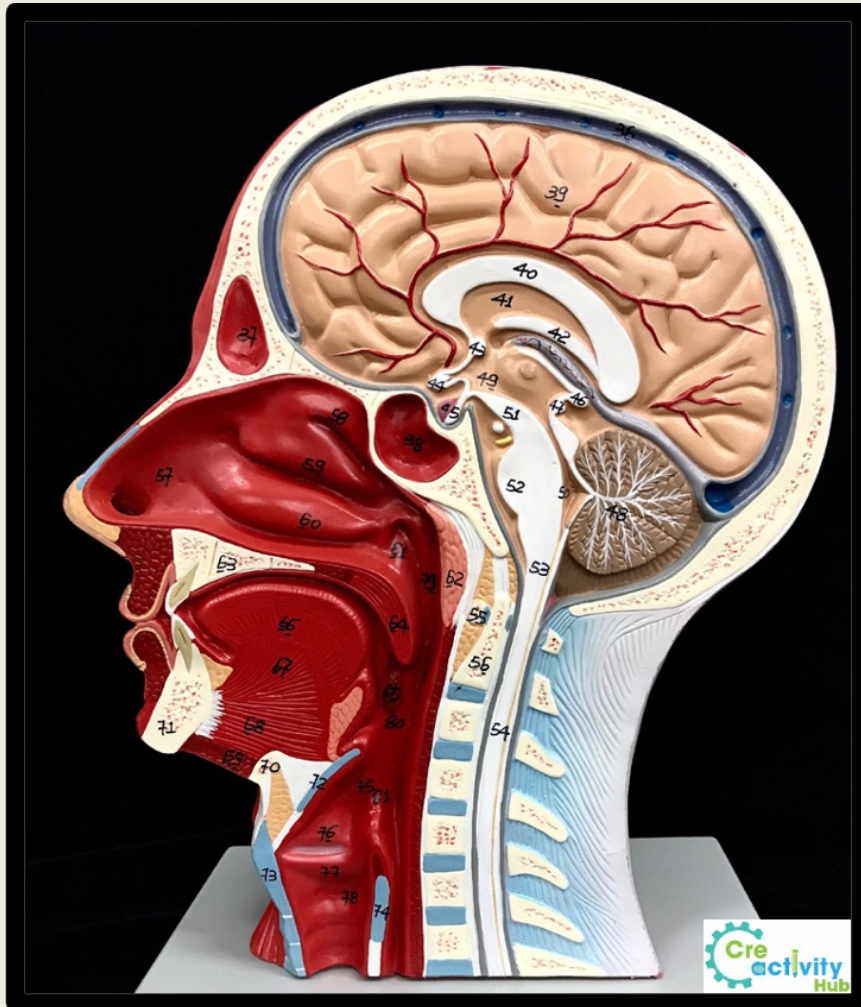
Digestive Tract Terminology List



Accessory Organs Terminology List

- Gallbladder
- Liver
- Pancreas
- Teeth
- Tongue

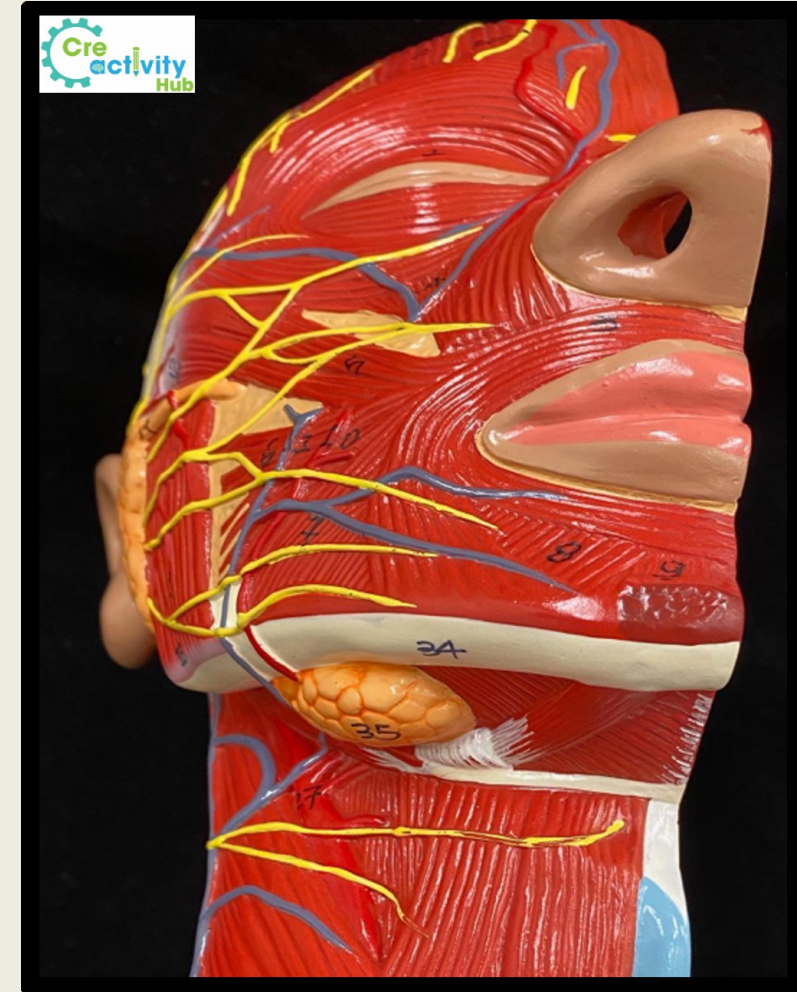
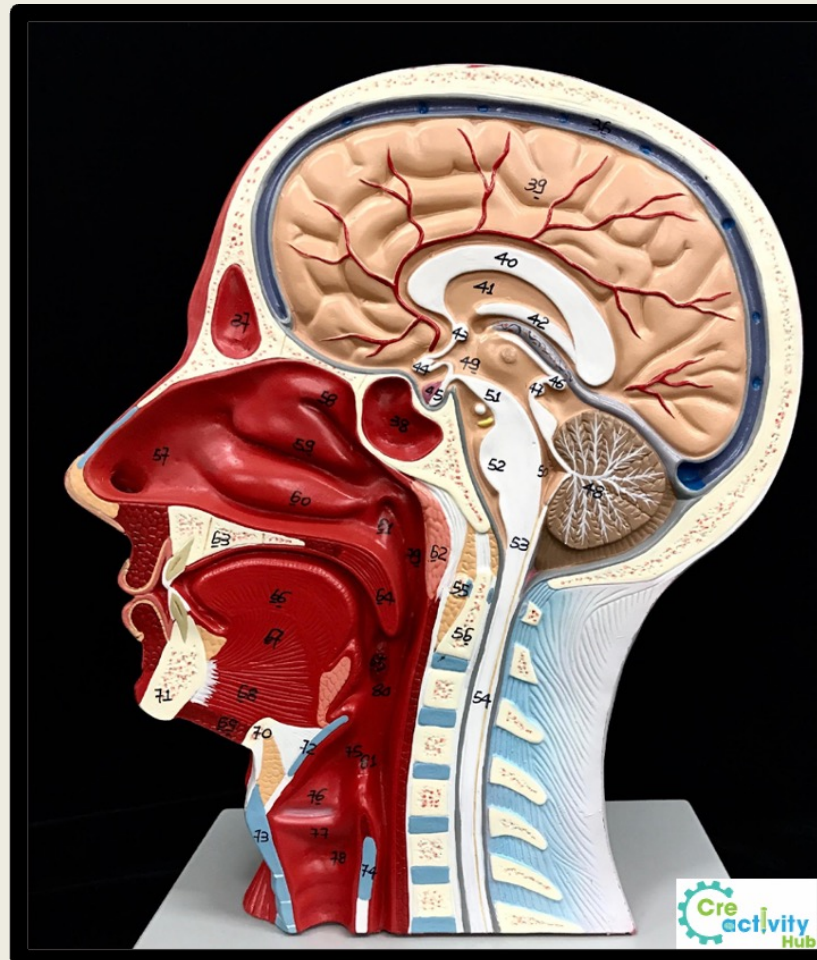
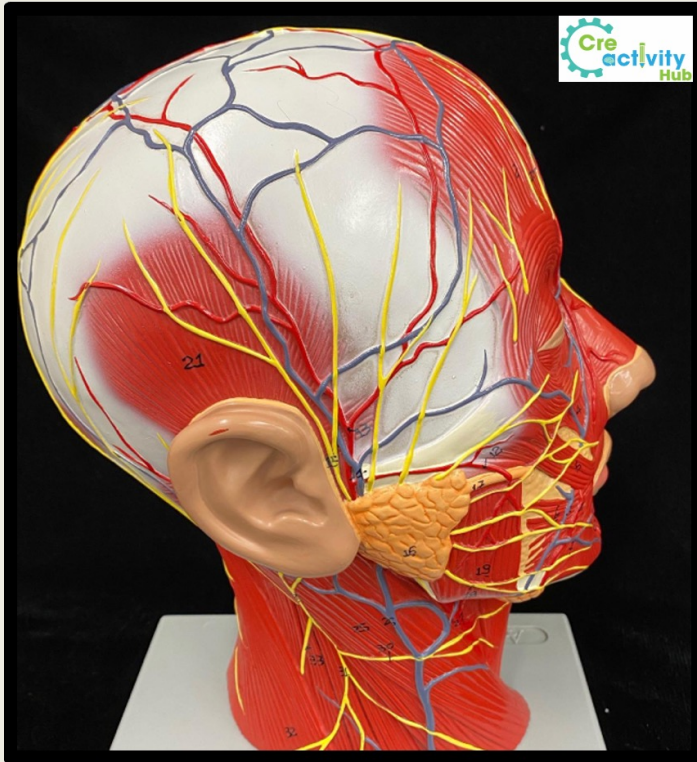
Accessory Organs Terminology List



Salivary Glands Terminology List

- Parotid salivary gland
- Sublingual salivary gland
- Submandibular salivary gland

Salivary Glands Terminology List



Stomach Structures and Regions Terminology List

- Body
- Cardia
- Esophagus
- Fundus
- Lower esophageal sphincter
- Pyloric sphincter
- Pylorus
- Rugae

Stomach Structures and Regions Terminology List

